



2023

stainless steel
1.5 TON

MRP
MRP PRICE LIST
STANDARD



Inclusive of all Taxes - w.e.f. 15th March 2023



HEXABOLT MAIN DOOR LOCK - 6 BOLTS



HSN Code : 83014090

No.	MODEL	FINISH	LOCKING	SECURITY	KEYS	MRP (₹)	FFS
-----	-------	--------	---------	----------	------	---------	-----

HEXABOLT : With 5 Dead Bolts & 1 Latch Bolt

1	H340AB/SN	AB/SN	2 CK Lockable Knob; Dead Lock Button	14 Pin Dimple Key	3+1 L Keys	5050	Y
---	------------------	-------	--------------------------------------	-------------------	------------	-------------	---



H340 SN

HEXABOLT- With 6 Dead Bolts

1	H341AB/SN	AB/SN	2 CK Lockable Knob; Dead Bolt	14 Pin Dimple Key	3+1 L Keys	4945	Y
---	------------------	-------	-------------------------------	-------------------	------------	-------------	---



H341 AB

HEXABOLT - WITH 5 DEAD BOLTS & 1 LATCH BOLT, WITH PLATE HANDLE

1	H347AB/SN	AB/SN	2 CK Lockable Knob + DLB; Reversible Plate Handle	14 Pin Dimple Key	3+1 L Keys	6645	Y
2	H367AB/SN	AB/SN	RH 2 CK Lockable Knob+DLB; Reversible Plate Handle	14 Pin Dimple Key	3+1 L Keys	6645	Y



*H347 AB with Reversible Plate Handle

*Handle designs are subject to change without prior intimation.



PARMA - MAIN DOOR LOCK with 3 Vertical Interlocking Dead Bolts - Dimple Key



HSN Code : 83014090

No.	MODEL	FINISH	LOCKING	SECURITY	KEYS	MRP (₹)	FFS
1	V321AB/SN	AB/SN	2 CK Lockable Knob	14 Pin Dimple Key	3 + 1 L Keys	4175	Y
2	V311AB/SN	AB/SN	1 CK Plain Knob	14 Pin Dimple Key	3 + 1 L Keys	3865	Y



V321 SN



V311 AB

NEW

NEXEN NEXT-GEN NIGHT LATCH



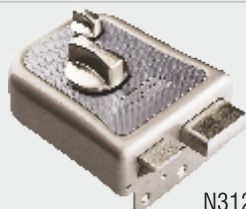
HSN Code : 83014090



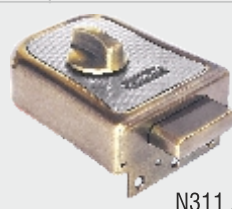
No.	MODEL	FINISH	LOCKING	SECURITY	KEYS	MRP (₹)	FFS
1	N310	AB/SN	1CK Knob on Inside, Two Stroke 1 Deadbolt, Small Latch Bolt	14 Pin Dimple Key	3+1 L Keys	2175	Y
2	N312	AB/SN	For Outside Opening: 1CK Knob On Inside, Two Stroke 1 Deadbolt, Small Latch Bolt	14 Pin Dimple Key	3+1 L Keys	2175	Y
3	N311	AB/SN	1CK Knob on Inside, Two Stroke Dead bolt.	14 Pin Dimple Key	3+1 L Keys	2125	Y
4	N313	AB/SN	for Outside Opening : 1CK Knob on Inside, Two Stroke Deadbolt.	14 Pin Dimple Key	3+1 L Keys	2125	Y



N310 AB



N312 SN



N311 AB



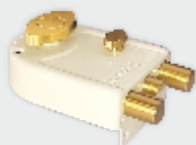
N313 SN


"Dimple KEY" MAIN DOOR LOCK With 2 Dead Bolts & 1 Latch Bolt

HSN Code : 83014090

COMMON REVERSIBLE LATCH BOLT FOR INSIDE/OUTSIDE OPENING DOORS

No.	MODEL	FINISH	LOCKING	SECURITY	KEYS	MRP (₹)	FFS
1	8013IN	IN	Knob On Inside : 2 Deadbolts & 1 Latchbolt (Nickel Chrome Finish)	14 Pin Dimple Key	3 Keys	2200	Y
2	8013NS	NS	Knob On Inside : 2 Deadbolts & 1 Latchbolt	14 Pin Dimple Key	3+1 L Keys	3145	Y
3	8013AB	AB	Knob On Inside : 2 Deadbolts & 1 Latchbolt	14 Pin Dimple Key	3+1 L Keys	3820	Y
4	8023NS	NS	Lockable Knob : 2 Deadbolts & 1 Latchbolt	14 Pin Dimple Key	3+1 L Keys	3690	Y
5	8023AB	AB	Lockable Knob : 2 Deadbolts & 1 Latchbolt	14 Pin Dimple Key	3+1 L Keys	4090	Y
6	8014NS	NS	For Outside Opening; Knob On Inside : 2 Deadbolts & 1 Latchbolt	14 Pin Dimple Key	3+1 L Keys	3145	Y
7	8014AB	AB	For Outside Opening; Knob On Inside : 2 Deadbolts & 1 Latchbolt	14 Pin Dimple Key	3+1 L Keys	3820	Y
8	8014IN	IN	For Outside Opening; Knob On Inside : 2 Deadbolts & 1 Latchbolt	14 Pin Dimple Key	3+1 L Keys	2200	Y



8013IN



8013AB



8023NS


"DIMPLE KEY" MAIN DOOR LOCK 3 Dead Bolts For Highest Security

HSN Code : 83014090

No.	MODEL	FINISH	LOCKING	SECURITY	KEYS	MRP (₹)	FFS
1	8113IN	IN	Knob On Inside (Nickel Chrome Finish)	14 Pin Dimple Key	3 Keys	2090	Y
2	8113IV	IV	Knob On Inside	14 Pin Dimple Key	3+1 L Keys	2560	Y
3	8113NS	NS	Knob On Inside (Nickel Chrome Finish)	14 Pin Dimple Key	3+1 L Keys	2835	Y
4	8113AB	AB	Knob On Inside	14 Pin Dimple Key	3+1 L Keys	3365	Y
5	8114NS	NS	For Outside Opening; Knob On Inside; 3 Deadbolts	14 Pin Dimple Key	3+1 L Keys	2835	Y
6	8123IN	IN	Lockable Knob (Nickel Chrome Finish)	14 Pin Dimple Key	3 Keys	2550	Y
7	8123IV	IV	Lockable Knob	14 Pin Dimple Key	3+1 L Keys	3145	Y
8	8123NS	NS	Lockable Knob (Nickel Chrome Finish)	14 Pin Dimple Key	3+1 L Keys	3210	Y
9	8123AB	AB	Lockable Knob	14 Pin Dimple Key	3+1 L Keys	3520	Y



8113NS



8123NS



8123AB



Vertical Interlocking Bolts : For Double & Sliding Doors.


JEMMY PROF DOOR LOCK FOR DOUBLE DOOR / SLIDING / MAIN DOOR

HSN Code : 83014090

No.	MODEL	FINISH	LOCKING	SECURITY	KEYS	MRP (₹)	FFS
1	J310NS	NS	Knob on inside : Dead Locking	14 Pin Dimple Key	3+1 L Keys	2120	Y
2	J310AB	AB	Knob on inside : Dead Locking	14 Pin Dimple Key	3+1 L Keys	2245	Y
3	J320NS	NS	Lock on inside : Dead Locking	14 Pin Dimple Key	3+1 L Keys	2395	Y
4	J320AB	AB	Lock on inside : Dead Locking	14 Pin Dimple Key	3+1 L Keys	2490	Y



J310V



J320NS



Surface Mounted Door Lock - Much safer than Aldrops



HSN Code : 83014090

NIGHT LATCH : (OUTSIDE OPENING DOOR MODELS WITH O/S RECEPTACLE AVAILABLE : CODE - 8011/1011/6011 : SAME MRP AS INSIDE MODELS)

No.	MODEL	FINISH	LOCKING	SECURITY	KEYS	MRP (₹)	FFS
1	6010SW	SW	Knob On Inside	5 Pin	3 Keys	1025	N
2	6010IV	IV	Knob On Inside	5 Pin	3 Keys	1060	N
3	6010NS	NS	Knob On Inside	5 Pin	3 Keys	1185	N
4	6011SW	SW	Knob On Inside For Outside Opening Door	5 Pin	3 Keys	1025	N
5	1010SW	SW	Knob On Inside	5 Pin	3 Keys	1440	N
6	1010IV	IV	Knob On Inside	5 Pin	3 Keys	1470	N
7	1010NS	NS	Knob On Inside	5 Pin	3 Keys	1500	N
8	1011NS	NS	Knob On Inside For Outside Opening Door	5 Pin	3 Keys	1500	N
9	1011SW	SW	Knob On Inside For Outside Opening Door	5 Pin	3 Keys	1440	N
10	8010IN	IN	Knob On Inside : (SP NICKEL Finish) IV Finish	14 Pin Dimple Key	3 Keys	1630	Y
11	8010IV	IV	Knob On Inside	14 Pin Dimple Key	3+1 L Keys	1840	Y
12	8010AB	AB	Knob On Inside	14 Pin Dimple Key	3+1 L Keys	2190	Y
13	8011IN	IN	Knob On Inside For Outside Opening Door	14 Pin Dimple Key	3 Keys	1630	Y
14	8011IV	IV	Knob On Inside For Outside Opening Door	14 Pin Dimple Key	3+1 L Keys	1840	Y
15	8011AB	AB	Knob On Inside For Outside Opening Door	14 Pin Dimple Key	3+1 L Keys	2190	Y
16	8011NS	NS	Knob On Inside For Outside Opening Door	14 Pin Dimple Key	3+1 L Keys	2020	Y
17	8010SN	SN	Knob On Inside	14 Pin Dimple Key	3+1 L Keys	1970	Y
18	8010NS	NS	Knob On Inside	14 Pin Dimple Key	3+1 L Keys	2020	Y



6010SW



1010SW



1010NS



8010IN



8010IV



8010NS

**RIM DEAD LOCK**

HSN Code : 83014090

No.	MODEL	FINISH	LOCKING	SECURITY	KEYS	MRP (₹)	FFS
1	6110SW/IV	SW/IV	Knob On Inside	5 Pin	3 Keys	1105	N
2	6110AB	AB	Knob On Inside	5 Pin	3 Keys	1150	N
3	6110NS	NS	Knob On Inside	5 Pin	3 Keys	1140	N
4	6120IV	IV	Lock On Inside	5 Pin	3 Keys	1325	N
5	6120AB	AB	Lock On Inside	5 Pin	3 Keys	1365	N
6	8110AB	AB	Knob On Inside 2 Stroke : 1 Deadbolt, Small LC	14 Pin Dimple Key	3 Keys	1850	Y
7	8110NS	NS	Knob On Inside 2 Stroke : 1 Deadbolt, Small LC	14 Pin Dimple Key	3 Keys	1690	Y
8	8120NS	NS	Lock On Inside 2 Stroke : 1 Deadbolt, Small LC	14 Pin Dimple Key	3 Keys	1850	Y
9	8120AB	AB	Lock On Inside 2 Stroke : 1 Deadbolt, Small LC	14 Pin Dimple Key	3 Keys	1960	Y



6110IV



8120AB

*For MAIN DOOR Locks Retrofit Adapter Available



C320AB



D120SS

Convenience At Your Fingertips...



On Dimple Key Lock



On 5 Pin Lock

HSN Code : 83014090

"FEATHER TOUCH" PRESS BUTTON CYLINDRICAL LOCK : For Minimum 28mm Door Panel

No.	MODEL	FINISH	LOCKING	SECURITY	KEYS	MRP (₹)	FFS
1	C120SS	SS	Lock / Unlock On Both Sides : O/S Key & I/S Thumbturn	5 Pin	3 Keys	1115	Y
2	C120AB	AB	Lock / Unlock On Both Sides : O/S Key & I/S Thumbturn	5 Pin	3 Keys	1365	Y
3	C320SS	SS	Thumbturn From Inside, For Emergency Outside Opening	NA	NA	1025	Y
4	C320AB	AB	Bathroom Door Lock	NA	NA	1310	Y
5	C440SS	SS	Lock / Key From Inside - Plain Cap From O/S	5 Pin	3 Keys	1115	Y
6	C550SS	SS	Balcony-Keyless-Plain Cap From O/S & Thumbturn Inside	NA	NA	1025	Y
7	D120SS	SS	Lock / Unlock On Both Sides : O/S Key & I/S Thumbturn	14 Pin Dimple Key	3 Keys	1365	Y
8	D120AB	AB	Lock / Unlock On Both Sides : O/S Key & I/S Thumbturn	14 Pin Dimple Key	3 Keys	1485	Y

*For Cylindrical Locks Big COVER RING available

NEW

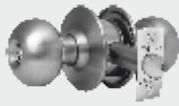
ROUND LOCK - 5 PIN KEY : For 32mm to 45mm Door Panel

HSN Code : 83014090

No.	MODEL	FINISH	LOCKING	SECURITY	KEYS	MRP (₹)	FFS
1	R050SS	SS	Push Button From Inside, for Emergency Outside Opening with 60mm Backset	NA	NA	690	N
2	R050AB	AB	Push Button From Inside, for Emergency Outside Opening with 60mm Backset	NA	NA	890	N
3	R060SS	SS	Push Button From Inside, for Emergency Outside Opening with 70mm Backset	NA	NA	690	N
4	R060AB	AB	Push Button From Inside, for Emergency Outside Opening with 70mm Backset	NA	NA	890	N
5	R150SS	SS	Lock / Unlock On Both Sides : O/s Key & I/s Push Button with 60mm Backset	5 Pin Key	3 Keys	750	N
6	R150AB	AB	Lock / Unlock On Both Sides : O/s Key & I/s Push Button with 60mm Backset	5 Pin Key	3 KEYS	950	N
7	R160SS	SS	Lock / Unlock On Both Sides : O/s Key & I/s Push Button with 70mm Backset	5 Pin Key	3 Keys	750	N
8	R160AB	AB	Lock / Unlock On Both Sides : O/s Key & I/s Push Button with 70mm Backset	5 Pin Key	3 KEYS	950	N
9	R053SS	SS	Balcony-key Less-plain Knob from O/S & I/S Push Button with 60mm Backset	NA	NA	690	N
10	R053AB	AB	Balcony-key Less-plain Knob From O/s & I/s Push Button with 60mm Backset	NA	NA	890	N
11	R063SS	SS	Balcony-key Less-plain Knob from O/S & I/S Push Button with 70mm Backset	NA	NA	690	N
12	R063AB	AB	Balcony-key Less-plain Knob From O/s & I/s Push Button with 70mm Backset	NA	NA	890	N



R060AB



R160SS



R150AB



R063SS

"Jack se bhee na khule"

"Jack Se Bhee Na Khule" WITHSTANDS LOAD OF 5 TONS

HSN Code : 83014090

CENTRE SHUTTER LOCK (With Anti-burglary Insurance Of Rs. 2 Lacs* & Extra Long Keys)

No.	MODEL	FINISH	LOCKING	SECURITY	KEYS	MRP (₹)	FFS
1	S110BL	BL	1 Side Locking (No ABI/No Combo Pack)	5 Pin Dimple Key	3 Keys	1005	N
2	S310BR	BR	1 Side Locking With ABI : Insurance	14 Pin Dimple Key	3 Keys	1595	N
3	S320BR	BR	2 Side Locking With ABI : Insurance	14 Pin Dimple Key	3 Keys	2045	N
4	S310SC	BR	S310 with ABI & P390 Twin Combo CK	14 Pin Dimple Key	3+1 L Keys	3715	N



S110BL



S320BR



P 170 SS



P370 BI
With Anti Burglary Insurance*



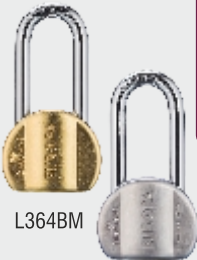
P 390 SS



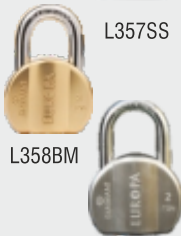
P990SS



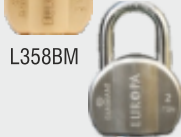
L158SS



L364BM



L357SS



L358BM

L365SS



HD01AB

DISC PAD LOCK



HSN Code : 83011000

No.	MODEL	FINISH	LOCKING	SECURITY	KEYS	MRP (₹)	FFS
1	P170SS	SS	St. Steel / Box Packing	5 Pin Key	3 Keys	390	N
2	P170BM	BM	Brass / Box Packing	5 Pin Key	3 Keys	425	N
3	P370SS	SS	Blister, 9.5mm Hard Shackle, Dust Cover	11 Pin Dimple Key	3 Keys	730	N
4	P370SSTW	SS	Twin Blister Pack + Common Key	11 Pin Dimple Key	3+1L Keys	1400	N
5	P370BM	BM	Box Pkg, 12mm Hard Shackle	11 Pin Dimple Key (B)	3 Keys	665	N
6	P370BI	BI	Insurance, Blister Pkg, 12mm Hard Shackle	11 Pin Dimple Key	3+1L Keys	810	N
7	P370BITW	BI	Twin Pack + Common Key	11 Pin Dimple Key	3+1 L Keys	1470	N
8	P390SS	SS	For Rolling Shutters, 14mm Hard Shackle	14 Pin Dimple Key	3 Keys	1335	N
9	P390SSTW	SS	Twin Pack + Common Key	14 Pin Dimple Key	3+1L Keys	2430	N
10	P990SS	SS	For Rolling Shutters, 14 Mm Hard Shackle	20 Pins, 6 Axes	3 Keys	1385	N
11	P990SSTW	SS	Twin Pack + Common Key	"Smart Plus" Key	3+1L Keys	2490	N



HSN Code : 83014090

The Modern Lock for the Modern Age !

"DIAMANT" PADLOCK WITH DLSB TECHNOLOGY. MODERN STYLING (BUMP+D SHAPE)

No.	MODEL	FINISH	LOCKING	SECURITY	KEYS	MRP (₹)	FFS
1	L158SS	SS	58 mm Box Pack 9.5 mm Hard Shackle	5 Pin	3 Keys	495	N
2	L158BM	BM	58 mm Box Pack 9.5 mm Hard Shackle	5 Pin	3 Keys	525	N
3	L364BM	BM	65mm Box Pack 11mm Long Shackle	14 Pin Dimple Key	3 + 1 L Key	950	N
4	L364SS	SS	65mm Box Pack 11mm Long Shackle	14 Pin Dimple Key	3 + 1 L Key	905	N
5	L357BM	BM	58mm Box Pack 9.5mm Long Shackle	11 Pin Dimple Key	3 Keys	810	N
6	L357SS	SS	58mm Box Pack 9.5mm Long Shackle	11 Pin Dimple Key	3 Keys	755	N
7	L358SS	SS	58 mm Blister Pack 9.5 mm Hard Shackle	11 Pin Dimple Key	3 Keys	750	N
8	L358BM	BM	58 mm Blister Pack 9.5 mm Hard Shackle	11 Pin Dimple Key	3 Keys	810	N
9	L358SSTW	SS	Twin Pack + Common Key	11 Pin Dimple Key	3 + 1 L Key	1420	N
10	L358BMTW	BM	Twin Pack + Common Key	11 Pin Dimple Key	3 + 1 L Key	1500	N
11	L365SS	SS	65 mm Blister Pack, 11 mm Hard Shackle	14 Pin Dimple Key	3 + 1 L Key	925	N
12	L365BM	BM	65 mm Blister Pack, 11 mm Hard Shackle	14 Pin Dimple Key	3 + 1 L Key	970	N
13	L365SSTW	SS	Twin Pack + Common Key	14 Pin Dimple Key	3 + 1 L Key	1650	N
14	L365BMTW	BM	Twin Pack + Common Key	14 Pin Dimple Key	3 + 1 L Key	1750	N

PULL HANDLES FOR MAIN DOOR

HSN Code : 83014090

No.	MODEL	FINISH	LOCKING	SECURITY	KEYS	MRP (₹)	FFS
1	HD00AB/SS	AB/SS	NL Plain Pull Handle	NA	NA	955	N
2	HD01AB/SS	AB/SS	NL with Hole Pull Handle	NA	NA	955	N

FURNITO™
DRAWER LOCK
India's First Drawer & Cupboard Lock with Dimple Key Technology...
7 YEARS
WARRANTY
HSN Code : 83013000
DRAWER LOCK - 5 PIN - SMALL BODY - STROKE 13 MM


F155IV



F175SS

No.	MODEL	FINISH	LOCKING	SECURITY	KEYS	MRP (₹)	FFS
1	F155IV	IV	Suitable for 16mm Panel Thickness Cylinder Height - 20mm Cly. (Ø) 20mm	5 Pin Key	2 Keys	232	N
2	F155SS	SS	Suitable for 16mm Panel Thickness Cylinder Height - 20mm Cly. (Ø) 20mm	5 Pin Key	2 Keys	258	N
3	F165IV	IV	Suitable for 20mm Panel Thickness Cylinder Height - 25mm Cly. (Ø) 20mm	5 Pin Key	2 Keys	266	N
4	F165SS	SS	Suitable for 20mm Panel Thickness Cylinder Height - 25mm Cly. (Ø) 20mm	5 Pin Key	2 Keys	286	N
5	F175IV	IV	Suitable for 25mm Panel Thickness Cylinder Height - 30mm Cly. (Ø) 20mm	5 Pin Key	2 Keys	312	N
6	F175SS	SS	Suitable for 25mm Panel Thickness Cylinder Height - 30mm Cly. (Ø) 20mm	5 Pin Key	2 Keys	328	N

FURNITO™
DRAWER LOCK
*India's First
 Drawer Cupboard Lock
 with Dimple Key*
DRAWER LOCK - DIMPLE KEY - SMALL BODY - STROKE 13 MM
15 YEARS
WARRANTY
HSN Code : 83013000


F355DR



F375AB

No.	MODEL	FINISH	LOCKING	SECURITY	KEYS	MRP (₹)	FFS
1	F355SS	SS	Suitable For 16mm Panel Thickness	11 Pin Dimple Key	2 Keys	351	N
2	F355AB	AB	Suitable For 16mm Panel Thickness	11 Pin Dimple Key	2 Keys	355	N
3	F355DR	RG	Suitable For 16mm Panel Thickness	11 Pin Dimple Key	2 Keys	355	N
4	F365SS	SS	Suitable For 20mm Panel Thickness	11 Pin Dimple Key	2 Keys	382	N
5	F365AB	AB	Suitable For 20mm Panel Thickness	11 Pin Dimple Key	2 Keys	385	N
6	F365DR	RG	Suitable For 20mm Panel Thickness	11 Pin Dimple Key	2 Keys	385	N
7	F375SS	SS	Suitable For 25mm Panel Thickness	11 Pin Dimple Key	2 Keys	412	N
8	F375AB	AB	Suitable For 25mm Panel Thickness	11 Pin Dimple Key	2 Keys	415	N
9	F375DR	RG	Suitable For 25mm Panel Thickness	11 Pin Dimple Key	2 Keys	415	N

NEW
FURNITO™
DRAWER LOCK
*India's First
 Drawer Cupboard Lock
 with Dimple Key*
DRAWER LOCK WITH INTEGRATED HANDLE DIMPLE KEY - SMALL BODY - STROKE 13 MM

15 YEARS
WARRANTY
HSN Code : 83013000


No.	MODEL	FINISH	LOCKING	SECURITY	KEYS	MRP (₹)	FFS
1	F355IH01AB	AB	Suitable for 16mm Panel Thickness with Integrated Handle	11 Pin Dimple Key	2 Keys	375	N
2	F355IH01SS	SS		11 Pin Dimple Key	2 Keys	365	N
3	F355IH01RG	RG (PVD)		11 Pin Dimple Key	2 Keys	385	N
4	F365IH01AB	AB	Suitable for 20mm Panel Thickness with Integrated Handle	11 Pin Dimple Key	2 Keys	405	N
5	F365IH01SS	SS		11 Pin Dimple Key	2 Keys	395	N
6	F365IH01RG	RG (PVD)		11 Pin Dimple Key	2 Keys	415	N
7	F375IH01AB	AB	Suitable for 25mm Panel Thickness with Integrated Handle	11 Pin Dimple Key	2 Keys	425	N
8	F375IH01SS	SS		11 Pin Dimple Key	2 Keys	420	N
9	F375IH01RG	RG (PVD)		11 Pin Dimple Key	2 Keys	435	N

F355IH01AB



F355IH01RG



FURNITO™
 CUPBOARD LOCK

CUPBOARD LOCK - 5 PIN - BIG BODY - STROKE 16 MM
7 YEARS
 WARRANTY

HSN Code : 83013000

No.	MODEL	FINISH	LOCKING	SECURITY	KEYS	MRP (₹)	FFS
1	F160IV	IV	Suitable for 20mm Panel Thickness Cylinder Height - 25mm Cly. (Ø) 20mm	5 Pin Key	2 Keys	325	N
2	F160SS	SS	Suitable for 20mm Panel Thickness Cylinder Height - 25mm Cly. (Ø) 20mm	5 Pin Key	2 Keys	361	N
3	F170IV	IV	Suitable for 25mm Panel Thickness Cylinder Height - 30mm Cly. (Ø) 20mm	5 Pin Key	2 Keys	366	N
4	F170SS	SS	Suitable for 25mm Panel Thickness Cylinder Height - 30mm Cly. (Ø) 20mm	5 Pin Key	2 Keys	433	N
5	F180IV	IV	Suitable for 32mm Panel Thickness Cylinder Height - 35mm Cly. (Ø) 20mm	5 Pin Key	2 Keys	407	N
6	F180SS	SS	Suitable for 32mm Panel Thickness Cylinder Height - 35mm Cly. (Ø) 20mm	5 Pin Key	2 Keys	469	N



F160IV



F180SS

FURNITO™
 CUPBOARD LOCK
*India's First
 Drawer Cupboard Lock
 with Dimple Key*
CUPBOARD LOCK - DIMPLE KEY - BIG BODY - STROKE 16 MM
15 YEARS
 WARRANTY

HSN Code : 83013000

No.	MODEL	FINISH	LOCKING	SECURITY	KEYS	MRP (₹)	FFS
1	F360SS	SS	Suitable For 20mm Panel Thickness	11 Pin Dimple Key	2 Keys	510	N
2	F360AB	AB	Suitable For 20mm Panel Thickness	11 Pin Dimple Key	2 Keys	515	N
3	F360DR	RG	Suitable For 20mm Panel Thickness	11 Pin Dimple Key	2 Keys	515	N
4	F370SS	SS	Suitable For 25mm Panel Thickness	11 Pin Dimple Key	2 Keys	541	N
5	F370AB	AB	Suitable For 25mm Panel Thickness	11 Pin Dimple Key	2 Keys	545	N
6	F370DR	RG	Suitable For 25mm Panel Thickness	11 Pin Dimple Key	2 Keys	545	N
7	F380SS	SS	Suitable For 32mm Panel Thickness	11 Pin Dimple Key	2 Keys	567	N
8	F380AB	AB	Suitable For 32mm Panel Thickness	11 Pin Dimple Key	2 Keys	575	N
9	F380DR	RG	Suitable For 32mm Panel Thickness	11 Pin Dimple Key	2 Keys	575	N



F360SS



F370DR

NEW
SLIDING WARDROBE LOCK - DIMPLE KEY
15 YEARS
 WARRANTY

HSN Code : 83013000

No.	MODEL	FINISH	LOCKING	SECURITY	KEYS	MRP (₹)	FFS
LA LENGTH 20MM							
1	F367SS/NS/IV	SS/NS/IV	Suitable For 20 mm - 25mm Panel Thickness	10 Pin Dimple Key	2 Keys	580	N
2	F367AB	AB	Suitable For 20 mm - 25mm Panel Thickness	10 Pin Dimple Key	2 Keys	650	N
3	F367TW	SS/NS/IV	Suitable For 20 mm - 25mm Panel Thickness	10 Pin Dimple Key	3 Keys	1100	N
4	F367TW	AB	Suitable For 20 mm - 25mm Panel Thickness	10 Pin Dimple Key	3 Keys	1250	N
LA LENGTH 25MM							
1	F387SS/NS/IV	SS/NS/IV	Suitable For 32 mm - 38mm Panel Thickness	14 Pin Dimple Key	2 Keys	600	N
2	F387AB	AB	Suitable For 32 mm - 38mm Panel Thickness	14 Pin Dimple Key	2 Keys	670	N
3	F387SS/NS/IVTW	SS/NS/IV	Suitable For 32 mm - 38mm Panel Thickness	14 Pin Dimple Key	3 Keys	1160	N
4	F387ABTW	AB	Suitable For 32 mm - 38mm Panel Thickness	14 Pin Dimple Key	3 Keys	1290	N



F367SS



F367IV



F387NS



F387AB

NEW**DOOR ACCESSORIES - TOWER BOLT - SS****HSN CODE - 83024110**

EUROPA
ANTI-THEFT ENGINEERING
accessories

No.	MODEL	FINISH	DESCRIPTION	DESIGN TYPE	SIZE IN INCH	MATERIAL	MRP (₹)
1	TB10038W002	SS Matt	Tower Bolt 4" with 10mm Rod Dia	NA	4 X 10	SS202	105
2	TB15038W002	SS Matt	Tower Bolt 6" with 10mm Rod Dia	NA	6 X 10	SS202	160
3	TB20038W002	SS Matt	Tower Bolt 8" with 10mm Rod Dia	NA	8 X 10	SS202	210
4	TB15038W003	SS Matt	Tower Bolt 6" with 12mm Rod Dia	NA	6 X 12	SS202	175
5	TB20038W003	SS Matt	Tower Bolt 8" with 12mm Rod Dia	NA	8 X 12	SS202	235
DOOR ACCESSORIES - TOWER BOLT - BRASS							
1	TB15038B003	AB/SS	Tower Bolt 6" with 12mm Rod Dia	NA	6 X 12	Brass	600



Tower Bolt : SS

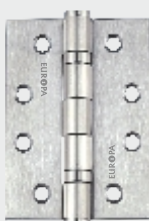
Tower Bolt : Brass : AB/SS

DOOR ACCESSORIES - HINGES - SS

No.	MODEL	FINISH	DESCRIPTION	DESIGN TYPE	SIZE IN INCH	MATERIAL	MRP (₹)
1	HG7519W001	SS Matt	75 X 19 X 19 x 1.8	SS Hinges Welded	3 X 16 (Heavy)	SS202	43
2	HG7519W002	SS Matt	75 X 19 X 19 x 2.5	SS Hinges Welded	3 X 12	SS202	66
3	HG10025W001	SS Matt	100 X 25 X 25 X 1.8	SS Hinges Welded	4 X 14	SS202	68
4	HG10025W002	SS Matt	100 X 25 X 25 X 2.5	SS Hinges Welded	4 X 12	SS202	81
5	HG10031W001	SS Matt	100 X 31 X 31 X 3	SS Hinges Welded	4 X 10	SS202	128
6	HG12525W001	SS Matt	125 X 25 X 25 X 2.5	SS Hinges Welded	5 X 12	SS202	100
7	HG12531W001	SS Matt	125 X 31 X 31 X 3	SS Hinges Welded	5 X 10	SS202	152
8	HG7519T001	SS Matt	75 X 19 X 19 X 2.5	SS Hinges Welded	3 X 12	SS304	108
9	HG10025T001	SS Matt	100 X 25 X 25 X 2.5	SS Hinges Welded	4 X 12	SS304	130
10	HG12525T001	SS Matt	125 X 25 X 25 X 2.5	SS Hinges Welded	5 X 12	SS304	162
11	HG10031T001	SS Matt	100 X 31 X 31 X 3	SS Hinges Welded	4 X 10	SS304	185
12	HG12531T001	SS Matt	125 X 31 X 31 X 3	SS Hinges Welded	5 X 10	SS304	232
13	HB10031T001	SS Matt	102 X 76 X 2.5(4 X 3 X 2.5)	2 Ball Bearing Type	4" X 3" X 2.5mm	SS304	325
14	HB12531T001	SS Matt	127 X 76 X 2.5(5 X 3 X 2.5)	2 Ball Bearing Type	5" X 3" X 2.5mm	SS304	380
15	HB10031T002	SS Matt	102 X 76 X 3(4 X 3 X 3)	2 Ball Bearing Type	4" X 3" X 3mm	SS304	360
16	HB12531T002	SS Matt	127 X 76 X 3(5 X 3 X 3)	2 Ball Bearing Type	5" X 3" X 3mm	SS304	430

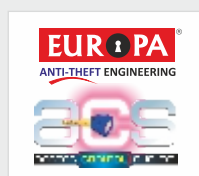


SS Hinges

SS Hinges
Ball Bearing

KEY MANAGEMENT SYSTEM (STANDARD COMMON KEY / MASTER KEY SETS): CK / MK

No.	MODEL	FINISH	LOCKING	SECURITY	KEYS	FFS	COMMON / MASTER KEY SETS						MRP (₹) PER LOCK
							CK/MK SETS	KEYS	CK/MK SETS	KEYS	CK/MK SETS	KEYS	
1	F155IVCK	IV	16 MM panel thickness	5 Pin Key	2 keys	N	5	10 Keys	10	20 Keys	20	40 Keys	232
2	F155SSCK	SS	16 MM panel thickness	5 Pin Key	2 keys	N	5	10 Keys	10	20 Keys	20	40 Keys	258
3	F160SSCK	SS	20 MM panel thickness	5 Pin Key	2 keys	N	5	10 Keys	10	20 Keys	20	40 Keys	361
4	F355SSCK	SS	16 MM panel thickness	11 Pin Dimple Key	2 keys	N	5	10 Keys	10	20 Keys	20	40 Keys	351
5	F360SSCK	SS	20 MM panel thickness	11 Pin Dimple Key	2 keys	N	5	10 Keys	10	20 Keys	20	40 Keys	510
6	F365SSCK	SS	20 MM panel thickness	11 Pin Dimple Key	2 keys	N	5	10 Keys	10	20 Keys	20	40 Keys	382
7	F375SSCK	SS	25 MM panel thickness	11 Pin Dimple Key	2 keys	N	5	10 Keys	10	20 Keys	20	40 Keys	412
8	F370SSCK	SS	25 MM panel thickness	11 Pin Dimple Key	2 keys	N	5	10 Keys	10	20 Keys	20	40 Keys	541
9	F380SSCK	SS	32 MM panel thickness	11 Pin Dimple Key	2 keys	N	5	10 Keys	10	20 Keys	20	40 Keys	567
10	L358SSCK	SS	58MM blister pack, 9.5mm hard shackle	11 Pin Dimple Key	3 Keys	N	5	15 Keys	10	30 keys	20	60 Keys	750
11	L365SSCK	SS	65MM blister pack, 11mm hard shackle	14 Pin Dimple Key	3+1L Key	N	5	20 Keys	10	40 Keys	20	80 Keys	925
12	L365BMCK	BM	65MM blister pack, 11mm hard shackle	14 Pin Dimple Key	3+1L Key	N	5	20 Keys	10	40 Keys	20	80 Keys	970
13	P370SSCK	SS	Blister, 9.5mm hard shackle, dust cover	11 Pin Dimple Key	3 Keys	N	5	15 Keys	10	30 keys	20	60 Keys	730
14	P390SSCK	SS	For rolling shutters, 14mm hard shackle	14 Pin Dimple Key	3 Keys	N	5	15 Keys	10	30 keys	20	60 Keys	1335
15	F365SSMK	SS	Suitable for 20mm panel thickness	11 Pin Dimple Key	2 keys	N	5	13 Keys	10	23 Keys	20	43 Keys	422
16	L365SSMK	SS	65MM blister pack, 11mm hard shackle	14 Pin Dimple Key	3+1L Key	N	5	23 Keys	10	43 Keys	20	83 Keys	965
17	D120SSMK	SS	Lock / unlock on both sides : O/S key & I/S thumbturn	11 Pin Dimple Key	3 Keys	Y	5	18 Keys	10	33 Keys	20	63 Keys	1405

**Key Management System****KEY MANAGEMENT SYSTEM (ACCESS CONTROL SYSTEM - ACS)**

Complete Home Security Solution with Special Access Controlled Keys

No.	SECURITY SOLUTION	MAIN DOOR	MASTER BEDROOM	CHILD BEDROOM	GUEST BEDROOM	TOTAL KEYS	TOTAL MRP (₹)	FFS
1	MODEL 1 BHK Security Solution MRP	AS 8010 NS (₹) 2020	AO D120 SS (₹) 1365	-	-	4 Keys	3385	Y
2	MODEL 2 BHK Security Solution MRP	AS 8113 NS (₹) 2835	AO D120 SS (₹) 1365	AC D120 SS (₹) 1365	-	6 Keys	5565	Y
3	MODEL 3 BHK Security Solution MRP	AS J310 NS (₹) 2120	AO D120 SS (₹) 1365	AC D120 SS (₹) 1365	AC D120 SS (₹) 1365	6 Keys	6215	Y

***Note : A set of locks for 1/2/3 BHK & Offices. For Main Door Locks - Option of Selecting any EUROPA DIMPLE key Main Door Lock**



KEYS	DOORS			
	MAIN DOOR	CHILD BEDROOM	GUEST BEDROOM	MASTER BEDROOM
Owner Key	✓	✓	✓	✓
Child Key	✓	✓	✓	✗
Maid Key	✓	✗	✗	✗

Key Management System (Special)

1 Week - 1 Key : CK, MK, ACS

(A) KEY TYPE - MASTER KEY (MK) / GRAND MASTER KEY (GMK) :

- 1) MK/GMK Rates are additional to MRP of the LOCKS and as per LOCK in the set.
- 2) STANDARD Number of MK / GMK per SET of one type is 03 (three) regular keys.
- 3) KEY PRICING as follows : *Per Lock Price

KEY TYPE	No.	MK SET QUANTITY	MK PER LOCK	GMK PER LOCK
MASTER KEY			MRP	MRP
	a)	Upto 100 Nos.	40.00	75.00
	b)	Over 100 Nos.	150.00	300.00

Key Management System (Special)

1 Week - 1 Key : CK, MK, ACS

Charges applicable on ALL LOCKS in the set.

- 4) For additional spare master keys the rates as per SPARE KEY PRICE LIST shall apply.
- 5) **MK, GMK RATE = KEY PRICE X No. OF LOCKS IN A SET**
- 6) The MK set must be CUSTOMISED : Set includes multi SKU locks / Less Number of Customer Keys (per Lock) wrt Standard sets.
- 7) Payment by Dealer & Customer to Company must be IMMEDIATE against delivery, apart from a 25% NON refundable advance payment.
- 8) Special Key order CAN NOT be cancelled / modified ONCE placed and accepted by the Company.
- 9) Order is Accepted by the Company on generation of ESO - Europa SPECIAL ORDER no. from Head Office.
- 10) Special MK, CK, ACS marking on each Lock. No unsold locks will be taken back.
- 11) Maximum Qty. per set = 300 locks for STD despatch period - Set qty. > 300 will need pre confirmation of delivery period which will be minimum 3 weeks.
- 12) Despatch period of 1 week is : from Day after Order acceptance, Advance Receipt by the Co. & ESO No. generation upto Despatch from Factory; excluding Logistics Transit time.
- 13) Despatch is from Factory to Dealer (NOT directly to Customer), LR No. & Transporter will be intimated to the Dealer.
- 14) MK / GMK is currently AVAILABLE only for DKL locks.
- 15) NON Interchangeability is valid only WITHIN 1 single SPECIAL Order at 1 site, placed at 1 time.
- 16) Special Orders will be delivered to the CUSTOMER, within 15 working Days of Order Acceptance / ESO No. generation, Advance Receipt; If Customer is paying EXTRA COURIER Charges.
- 17) Working days exclude : Weekly off, Bank holidays & Block Diwali holidays & the day of ESO registration.
- 18) Available in selected cities only.

KEY MANAGEMENT SOLUTIONS



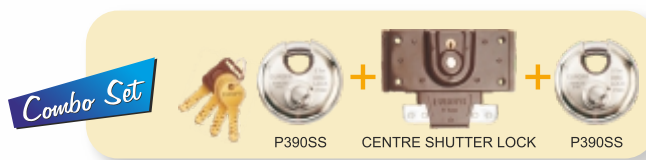
One Key Solution, Make Life Simple...



Terms & conditions apply

Convenience | Integrated Security | Access Control | Key Loss Protection

For Homes, Hospitals, Hotels, Factories, Godowns, Schools, Colleges & Institutions



ALSO AVAILABLE



FINISHES

AB : ANTIQUE BRASS
SS : STAINLESS STEEL
SN : SATIN NICKEL

IV : IVORY
BL : BLACK
BR : BROWN

BI : BRASS (with Dust Cover)
BM : BRASS (w/o Dust Cover)
NS : NICKEL SILK

SW : SHELL WHITE
RG : ROSE GOLD
IN : IVORY NICKEL

SERVICES

(A) COMMON KEY DOOR LOCKS i.e. COMBO SETS : A range of Dimple Key / 5 Pin Locks with 1 Common Key.

- Available in ANY COMBINATION OF DKL / 5 Pin locks ENTIRE RANGE.
MRP equals to total MRP of all Locks in that Common Key Set.
- STANDARD KEYS in each set :
DKL (DIMPLE KEY LOCK) 14 Pins 3+1 L Keys or 4
NL (Ordinary Pin Tumbler) 5 Pins 3 (Reg)
- For additional Common / Master Keys (reqd. either with order or later); the rates as per SPARE KEYS PRICE LIST shall apply.



(B) SPARE / (Additional) / KEYS PRICE LIST (MRP)

	No.	5 Pin Key	11 Pin Dimple Key	14 Pin Dimple Key	Dimple Light Key	Smart Key	Smart Light Key
CUSTOMER	1 Key	MRP	MRP	MRP	MRP	MRP	MRP
		90.00	120.00	150.00	250.00	200.00	300.00

NOTE : Spare Keys shall be supplied to CUSTOMER by ONLINE ADVANCE PAYMENT STRICTLY against receipt of Original KEY & address proof / identity proof. Keys shall not be sent to dealers or distributors etc. For more than 1 Key MRP of 1 Key will be multiplied with nos. of Keys required. Courier Charges Extra (at actual)

(C) FITMENT SERVICE CHARGES

Sr. No.	Activity	Charge (Rs.)	Borne By	Remark
1.	Free Fitting (Wooden Door & Frame) (On applicable products)			
	a) Serviceable Area	Free	WLSPL	
	b) Non Serviceable Area	Conveyance Extra (At Actuals)	Customer	
	Paid Fitting (Wooden Door & Frame) (For Mortise range of applicable products)			
	a) Serviceable Area	Rs 300/- per Lock	Customer	
	b) Non Serviceable Area	Rs 300/- per Lock + Conveyance Extra (At Actuals)	Customer	
2.	Fitment on Designer Wooden Door			
	a) Serviceable Area	Rs. 250/-	Customer	
	b) Non Serviceable Area	Rs. 250/- + Conveyance Extra (At Actuals)	Customer	
3.	Emergency Breaking			
	a) Serviceable Area - (8.00 a.m. - 8.00 p.m.)	Rs. 400/-	Customer	
	(8.00 p.m. - 8.00 a.m.)	Rs. 800/-	Customer	
	b) Non Serviceable Area - (9.00 a.m. - 8.00 p.m.)	Rs. 800/- + Conveyance Extra (At Actual)	Customer	
4.	Mechanical Warranty			
	a) Serviceable Area	Free Service	WLSPL Customer	If within warranty period
	b) Non Serviceable Area	Free Service Conveyance Extra (At Actual)	WLSPL Customer	If within Warranty period
5.	Non Function Complaint (Physical Damages / Non Defective issues)			
	a) Serviceable Area	Rs. 200/- Visiting Charges and spares at actual.	Customer	If within Warranty period
	b) Non Serviceable Area	Rs. 200/- Visiting Charges and spares at actual. + Conveyance Extra (At Actual)	Customer	If within Warranty period
6.	Extra Payable Charges			
a) I or II Visit	*Rs. 200/- per Visit	Customer	Due to non availability of the customer/Inputs.	

FFS : Free Fitting Service Available within 4 working days on applicable locks, subject to terms and conditions and is available / applicable within old city / corporation limits (Y), Conditions Apply. Not available (N) = Fitment Charges Extra. Free Fitment : Service available only in following cities :

South India : Bangalore, Mysore, Mangalore, Hubli, Chennai, Coimbatore, Madurai, Kochi, Calicut, Hyderabad, Vizag, Shimoga, Tumkur, Pudukcherry, Gulbarga, Hassan, Davanagere, Ananthpur, Guntur & Godavari.

West India : Mumbai, Pune, Nashik, Sangli, Ahmednagar, Aurangabad, Jalgaon, Nagpur, Amravati, Indore, Bhopal, Ahmedabad, Surat, Baroda, Rajkot, Anand-Nadiad, Bharuch, Jamnagar, Raipur & Jaipur.

North India : New Delhi, NCR, Chandigarh, Lucknow, Kanpur, Varanasi, Gorakhpur.

East India : Kolkata & Bhubaneswar.

TERMS & CONDITIONS

- This Price List is subject to change without prior notice.
- This cancels all our previous Price Lists.
- Subject to Pune Jurisdiction.
- Inclusive of all Taxes

- Specifications may change in view of continuous innovations.
- Product images shown are for presentation purpose, actual product may vary.
- Imitation of Label Graphics is a punishable offence.

Note : FFS Applicable only if Lock purchased from Local Authorised Dealer*.

*Terms & Conditions apply, for more details visit the website.



Developed, Manufactured & Marketed by :
WELMADE LOCKING SYSTEMS PRIVATE LIMITED

Corporate Office :
J-61, MIDC, Bhosari, Pune - 411 026. Maharashtra (India)
Toll Free No. : 1800123061061 | Tel. : 020 - 2712 2546 / 2468 / 1857
E-mail : service@europalocks.com, marketing@europalocks.com
www.europalocks.com



SCAN FOR MORE INFO

*Conditions Apply **For Relevant Products only.

MRP/June/2023/4000